

2nd Pass Website and Device Overview

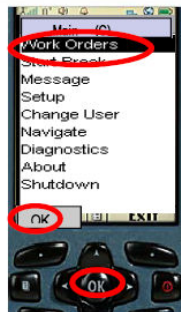
Logging In:

<http://ibis.agilissystems.com/tribspd>

Username: XXXX (your district number)

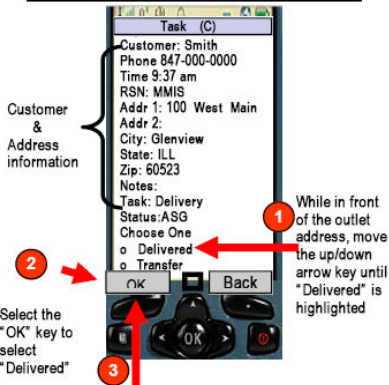
Password: XXXX (your district number)

Device Functions



Choose the Outlet by moving up/down key select either OK key

MARKING AN OUTLET "DELIVERED"



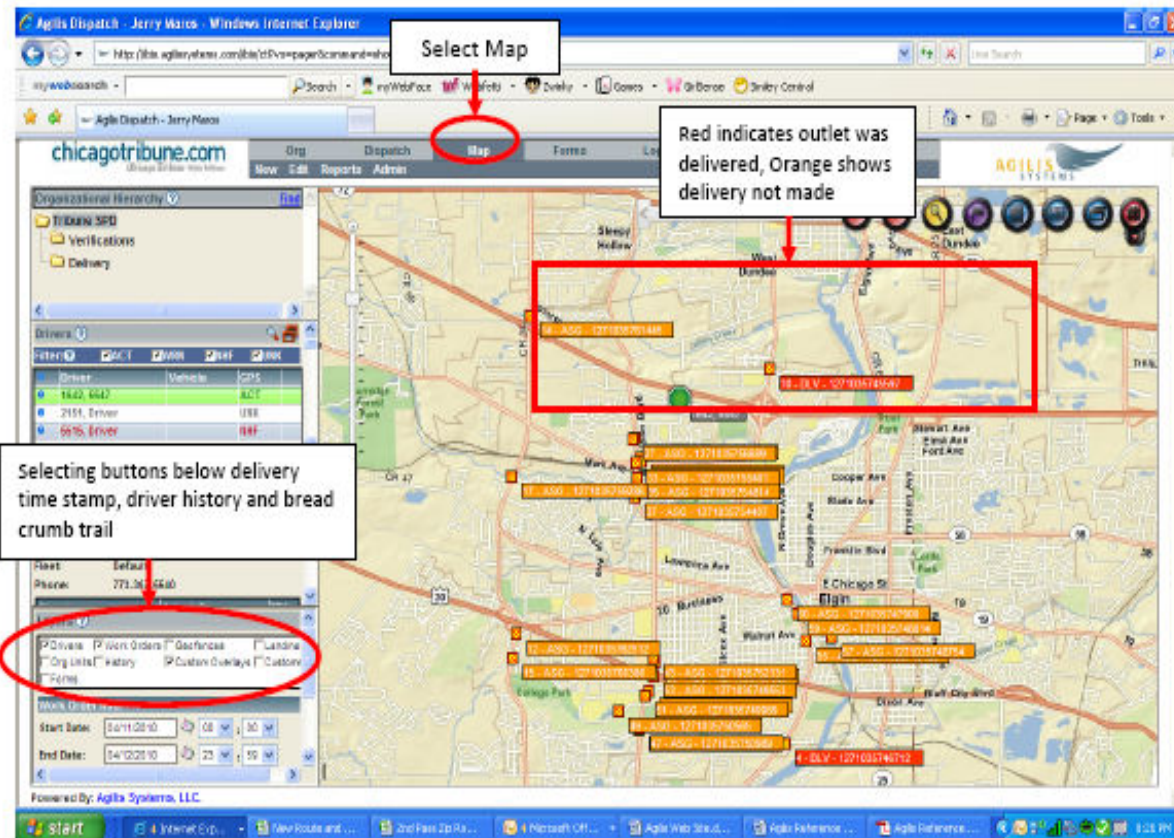
Customer & Address information

1 While in front of the outlet address, move the up/down arrow key until "Delivered" is highlighted

2 Select the "OK" key to select "Delivered"

3 Select the "OK" soft key to save the information, then the stamp returns to the website

GPS & Tracking Functions

A screenshot of the Agilis Dispatch web application in a browser window. The 'Map' button in the top navigation bar is circled in red. A callout box points to the map with the text 'Red indicates outlet was delivered, Orange shows delivery not made'. Another callout box points to the bottom navigation bar with the text 'Selecting buttons below delivery time stamp, driver history and bread crumb trail'. The map shows various delivery points marked with red and orange icons. The browser address bar shows 'http://ibis.agilissystems.com/ibis/tribspd/paper/ibisandmho'. The page title is 'Agilis Dispatch - Jerry Meaco'. The page content includes an organizational hierarchy, a driver list, and a map. The driver list has columns for Driver, Vehicle, and GPS. The map shows a street grid with delivery points marked with red and orange icons. The bottom navigation bar has buttons for 'Home', 'Work Orders', 'Dispatches', 'Landings', 'Org Units', 'History', 'Custom Overlays', and 'Custom Forms'. The start and end dates are set to 04/11/2010 and 04/22/2010 respectively. The page is powered by Agilis Systems, LLC.

Select Map

Red indicates outlet was delivered, Orange shows delivery not made

Selecting buttons below delivery time stamp, driver history and bread crumb trail